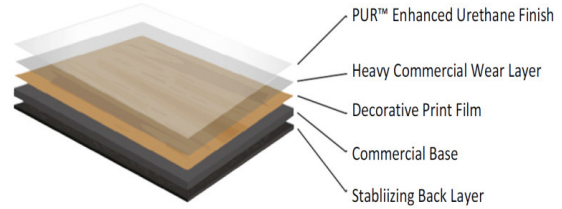




Holcombe Flooring
Your Resilient Flooring Masters...

SPECIFICATION

COLLECTION	LVT SERIES 2
STYLE	STONESET
SIZE	12" x 24"
OVERALL GAUGE	3.0MM
WEAR LAYER	0.5MM
FINISH	PUR®
INSTALLATION	GLUE DOWN
PACKING	12 PCS = 28 SF = 2.60 SM/BOX



WEAR CLASSIFICATION COMMERCIAL GRADE RESILIENT TILE

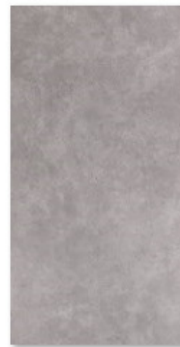
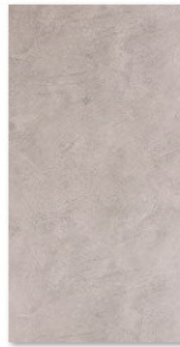
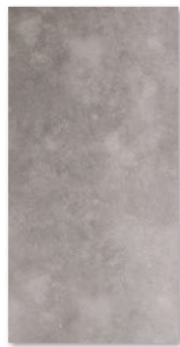
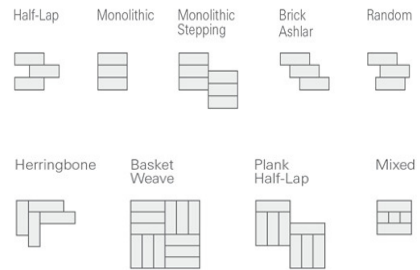
SUSTAINABILITY FLOORSCORE® CERTIFIED
COMMERCIAL - LIMITED 10 YEARS
RESIDENTIAL - LIMITED 15 YEARS

TREATMENT ANTI-BACTERIAL WITIN PUR™

Technical Characteristics	EN standard	Temperature: 23°C ± 2°C	EN standard	Humidity: 50% ± 5%
Item	Standard	Unit	Result	
Length/Width	EN427	mm	≤ 0.13% ≤ 0.50mm	
Squareness/Straightness	EN427	mm	≤ 0.25mm	
Total thickness	EN428	mm	± 0.15mm	
Wear layer	EN429	mm	± 0.02mm	
Middle/back layer	EN429	mm	± 0.01mm	
Total mass per unit area	EN 430	---	Nominal value +13% / -10%	
Peeling Strength of layer	EN431	---	> 50N/50mm	
Residual indentation (average)	EN433	mm	< 0.1	
Sound, impact, reduction	EN ISO 717-2	dB	> 4.8	
Fire Resistance	EN13501-1	---	Bfl-S1	
Dimension stability after exposure to heat	EN434	%	< 0.25	
Curling after exposure to heat	EN434	mm	< 1.2mm	
Color fastness to light	ISO105 B02	---	grade > 6	
Loss on heating	JIS A5705	---	< 0.5%	
Change in length to water absorption	JIS A5705	mm	< 0.20mm	
Flexibility	EN435	---	pass	
Abrasion resistance	EN660	---	Class T	
Castor Chair resistance	EN425	---	Pass	
Slip resistance	EN13893	---	Class DS	
Chemical resistance	EN423	---	Pass	
Bearing a castor chair	EN425	---	pass	
Toxicity	EN71-3	---	pass	
Performance Classification	EN 685	---	23-33-42	
Underfloor heating suitable		---	suitable	

Recommended Applications

- Education – university centers, corridors, offices, cafeterias, classrooms
- Healthcare – non-aseptic areas of hospitals, senior living, medical office buildings
- Retail – high-traffic stores
- Hospitality – public space, back of house areas
- Corporate – lobbies, corridors, break rooms



StoneSet LVT - 1903-03 StoneSet LVT - 1903-09 StoneSet LVT - 1903-32 StoneSet LVT - 1925-01 StoneSet LVT - 1925-03 StoneSet LVT - 2030-10